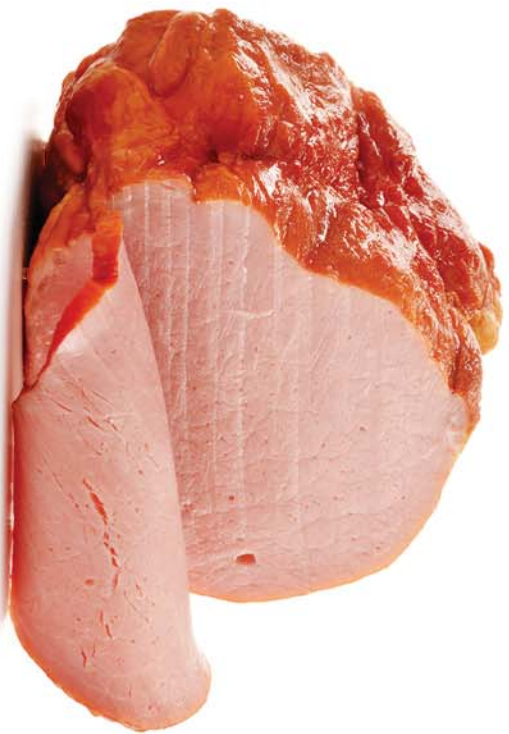




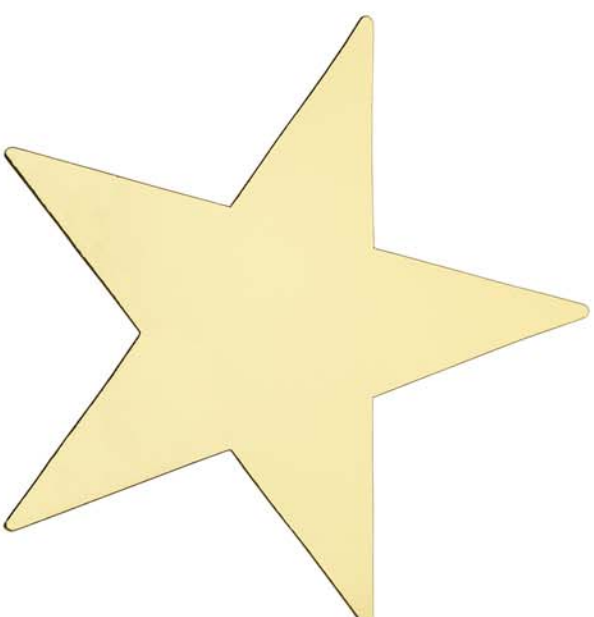
2

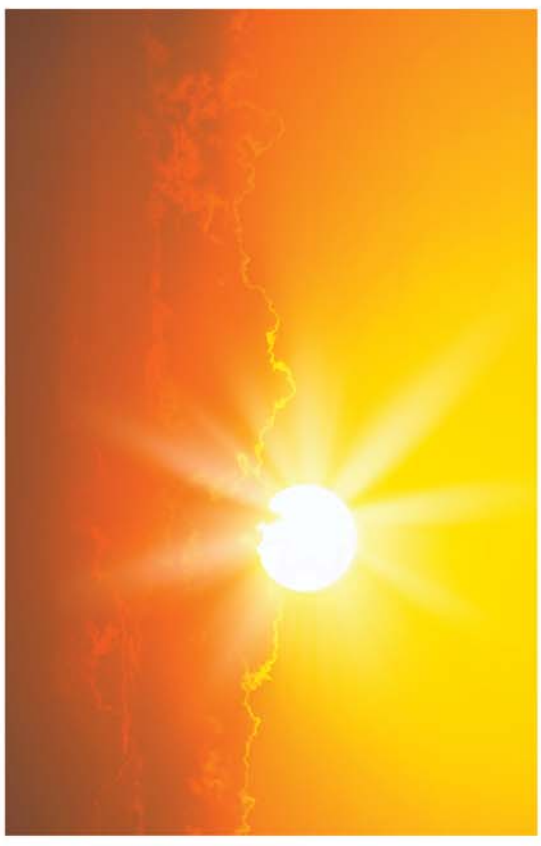






















Picture Cards for Compound Word and Two-Syllable Word Games

Below is an index of the words for the pictures on each picture card. These cards are used in Activities D3, D5, D7, E4, E6, and E8.

Page 1:	ant	eye	bag	bird
Page 2:	cake	key	fan	fish
Page 3:	dish	doll	nail	net
Page 4:	man	knee	gold	gum
Page 5:	pan	pear	saw	shoe
Page 6:	tea	two	chair	can
Page 7:	ball	bow	ham	horse
Page 8:	wheel	wig	bee	book
Page 9:	ring	rock	thumb	ten
Page 10:	pill	plum	sock	star
Page 11:	skate	sun	corn	cow
Page 12:	dog	door	hand	house
Page 13:	light	lock	bowl	box
Page 14:	king	cone	fence	foot
Page 15:	tie	toe	pen	paint
Page 16:	stick	car	wall	chalk